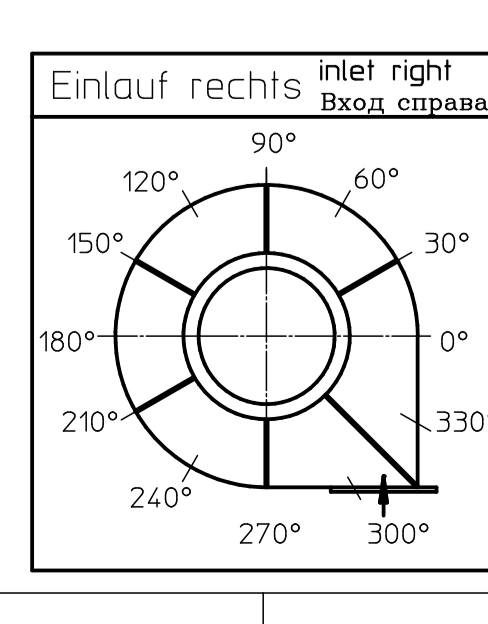
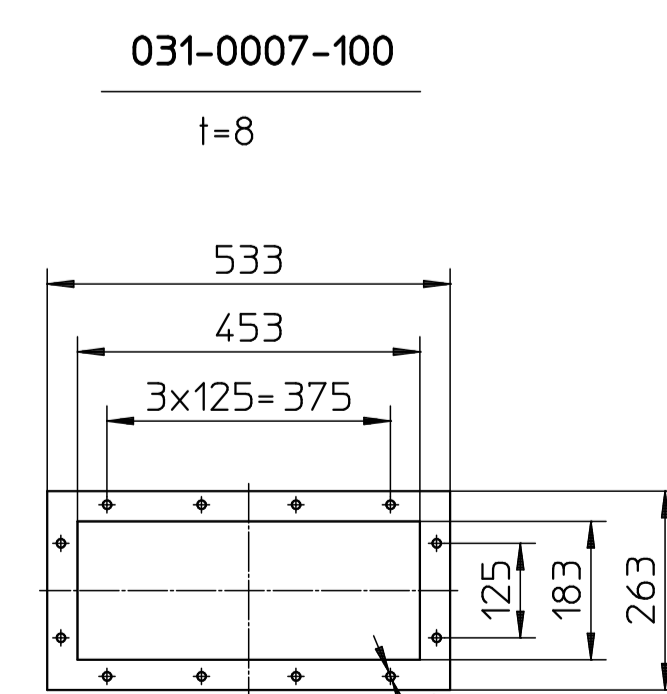
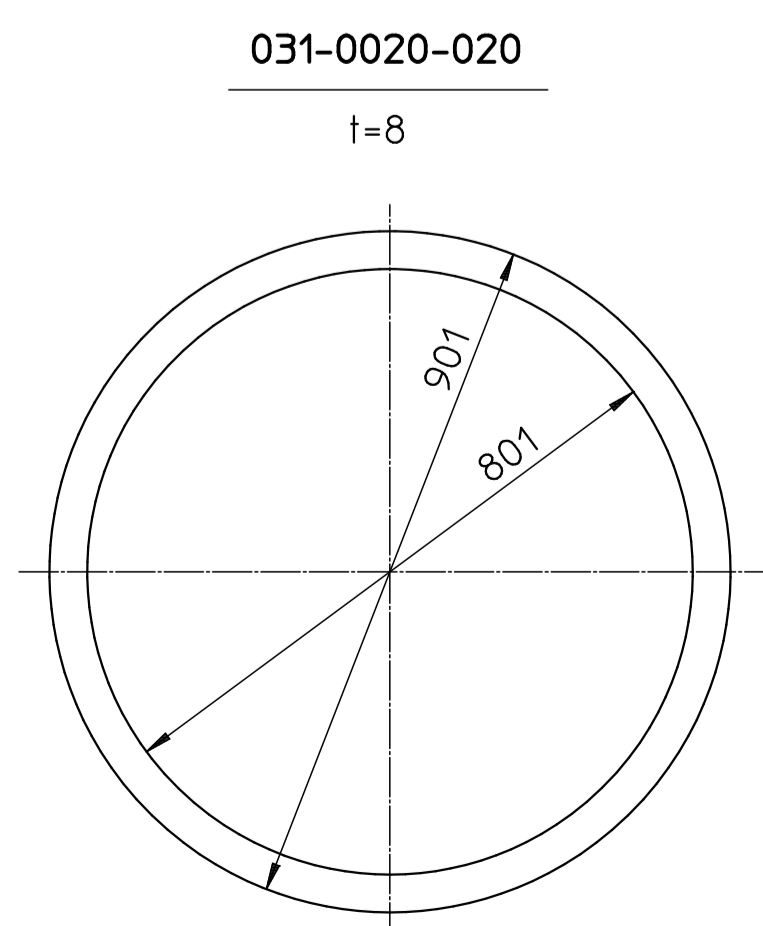
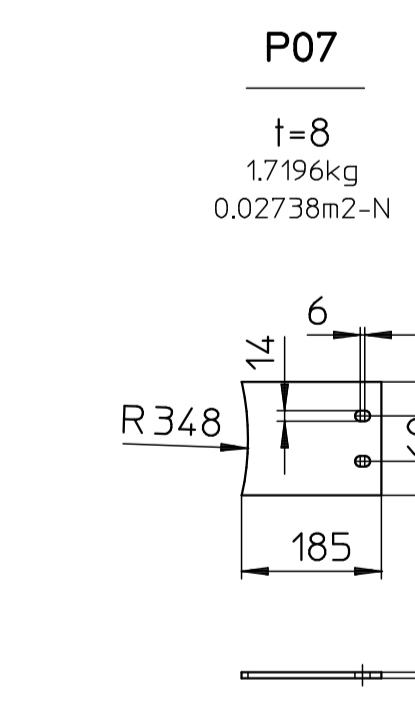
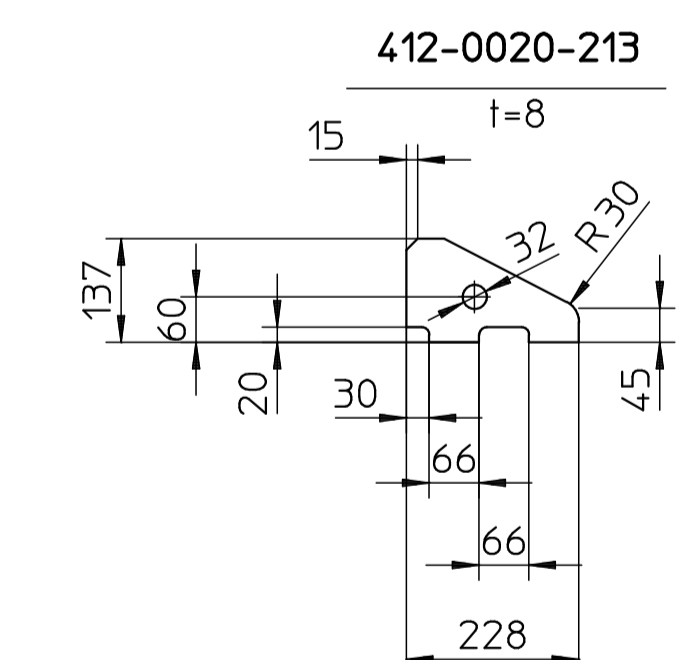
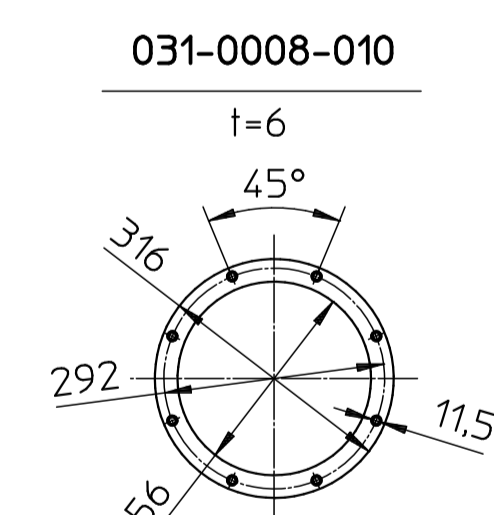
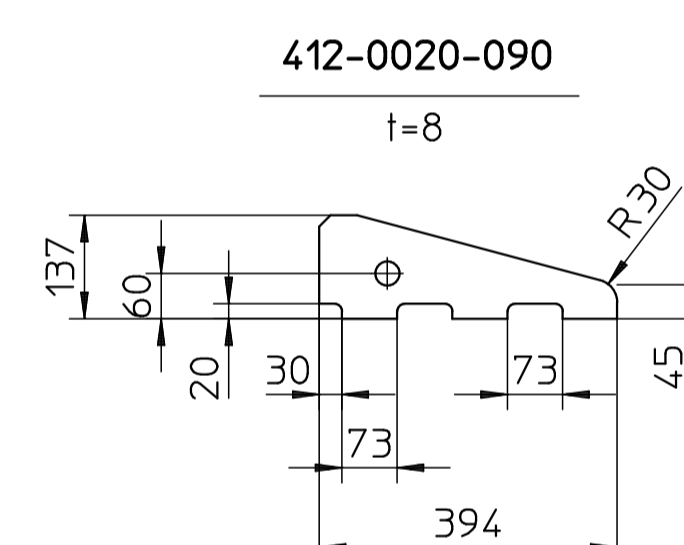
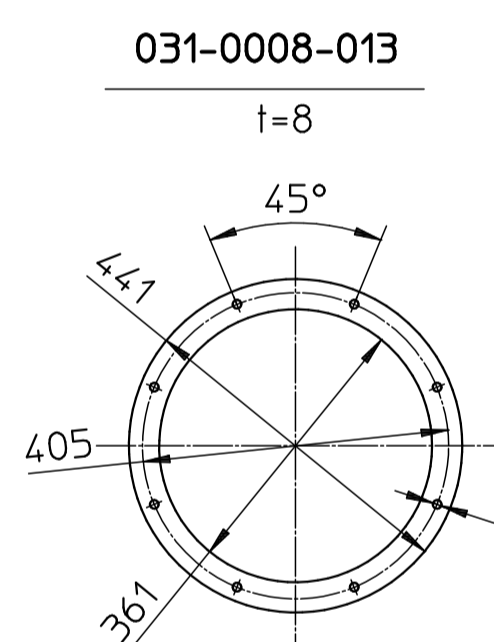
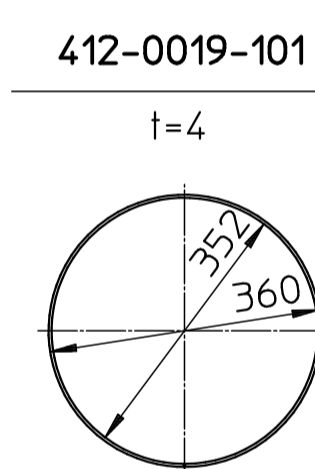
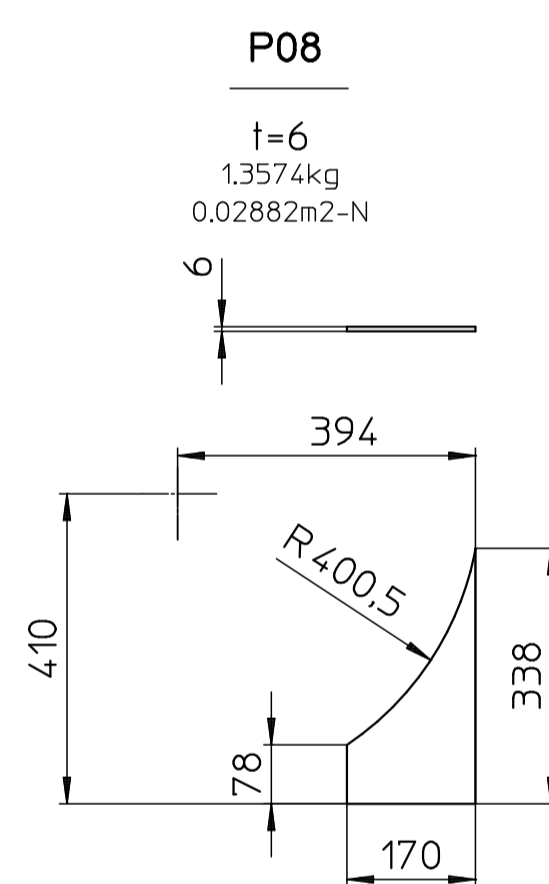
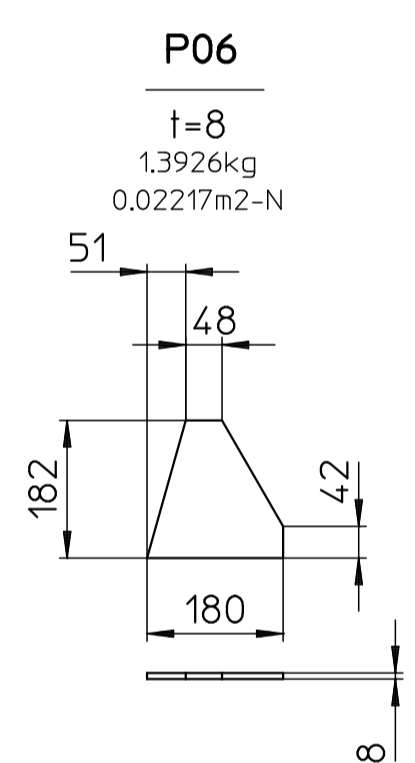
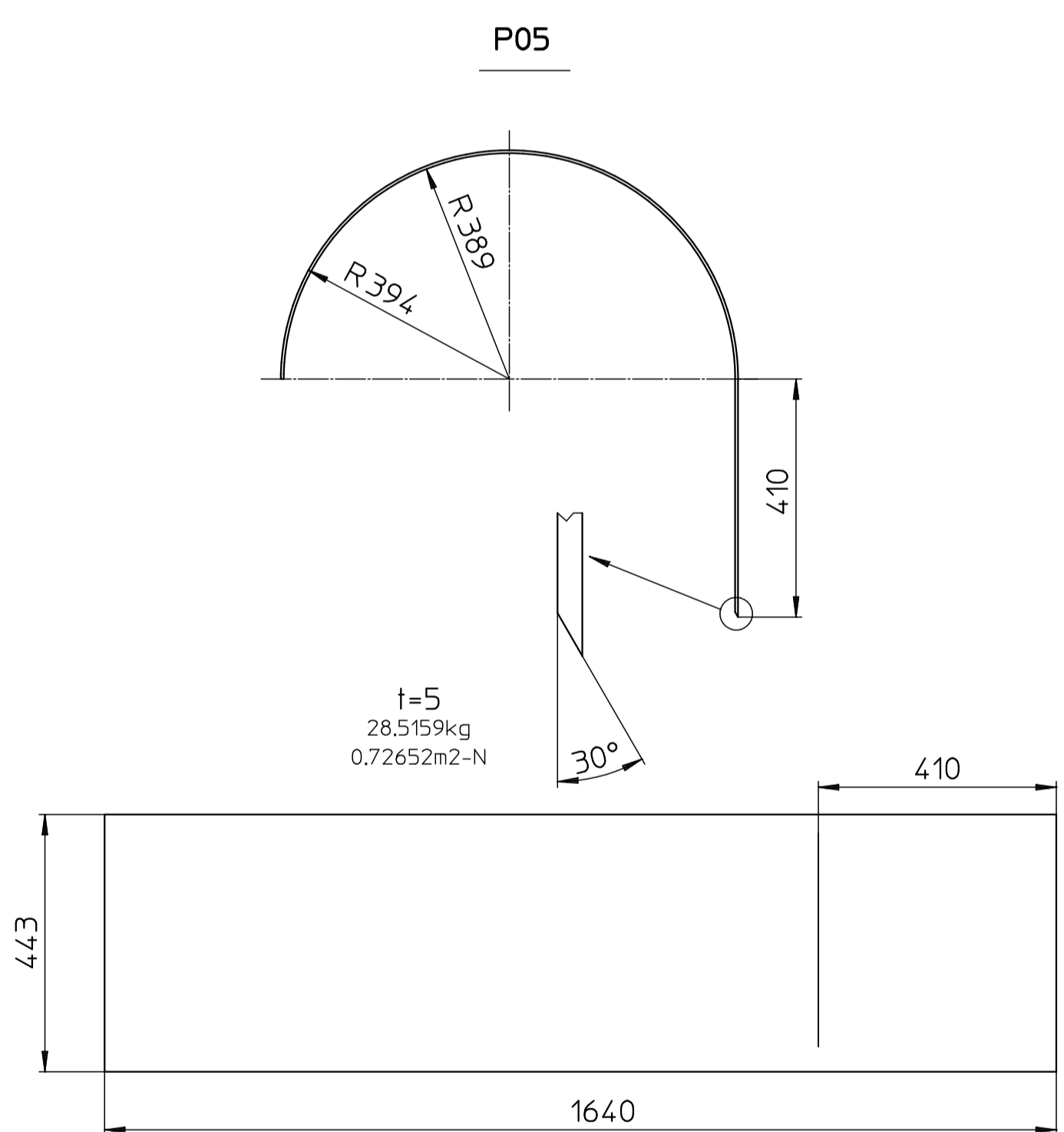
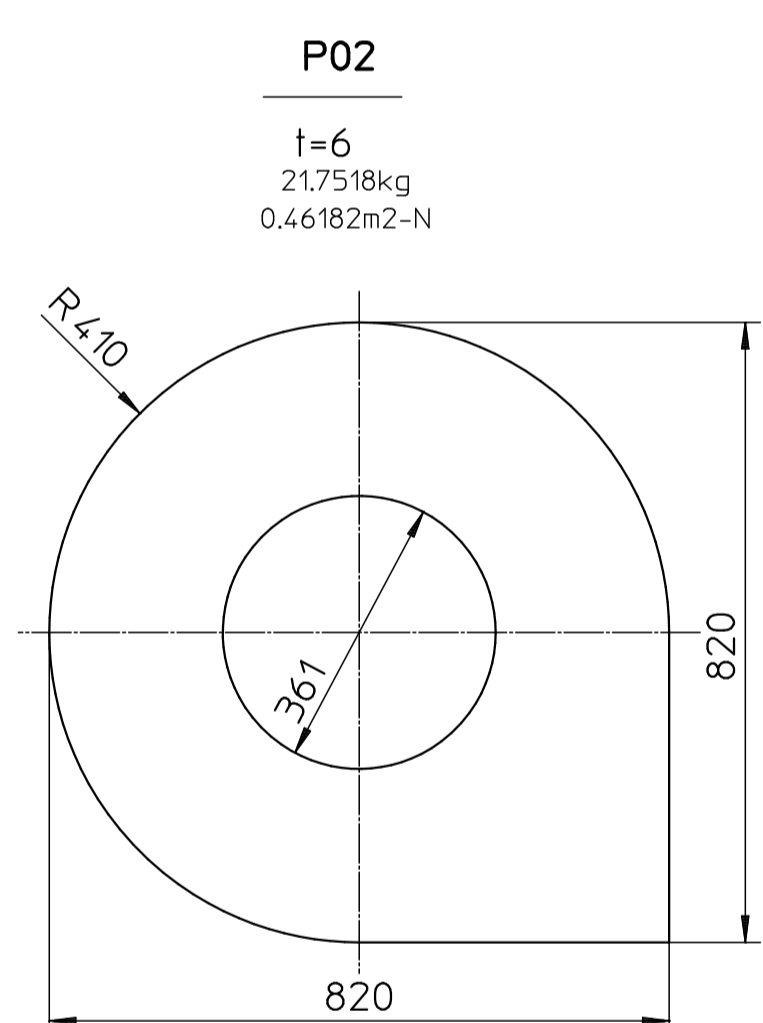
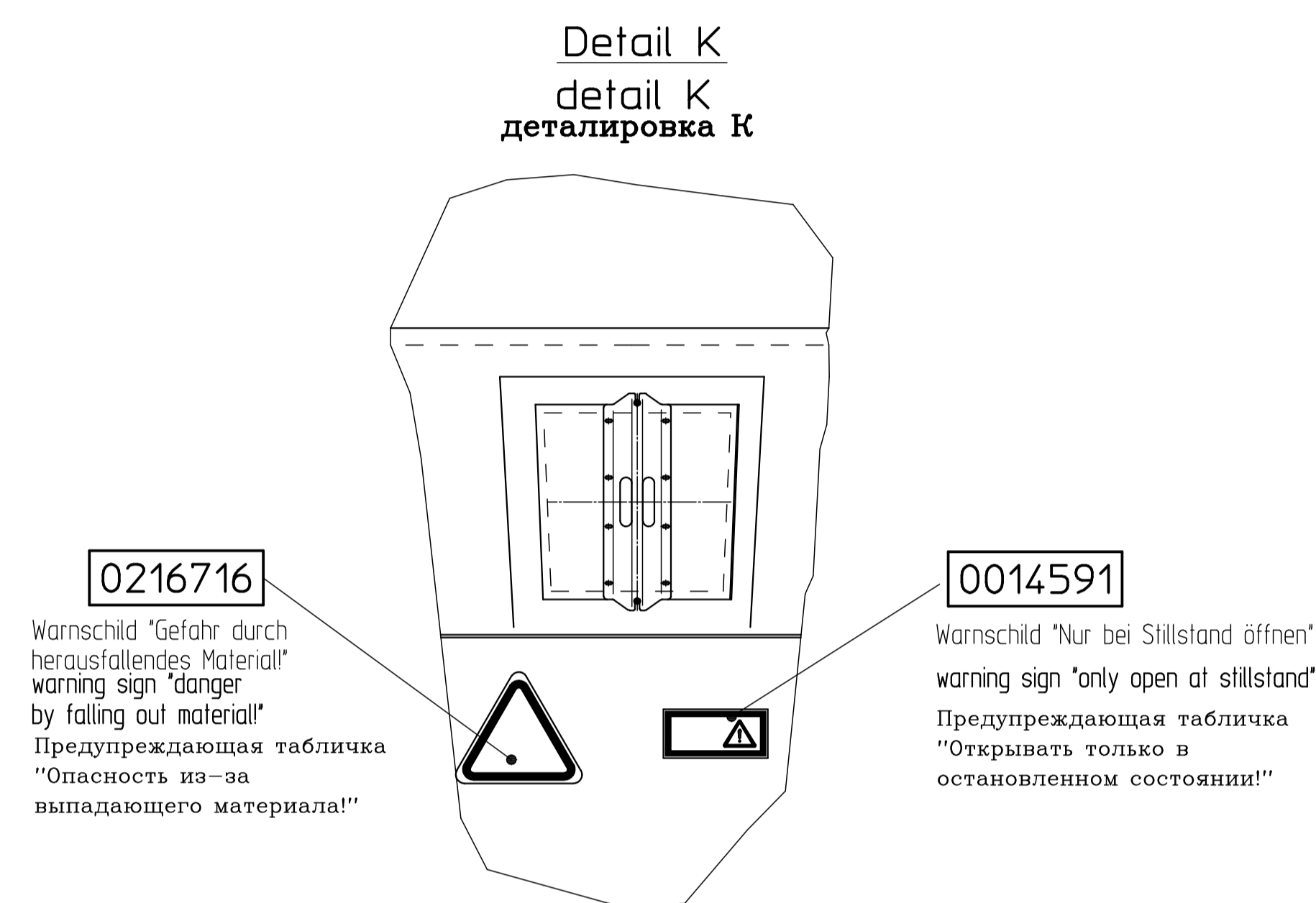
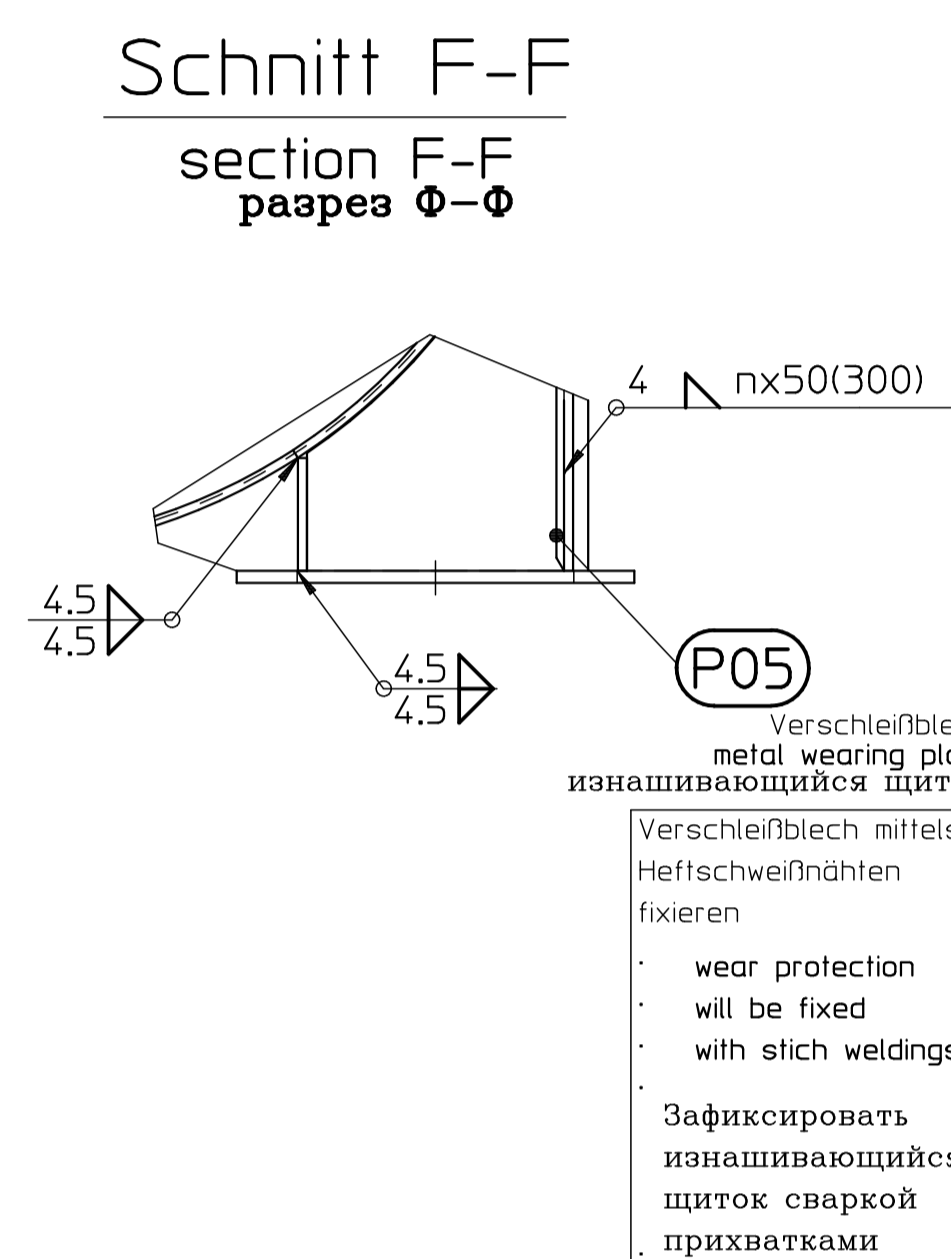
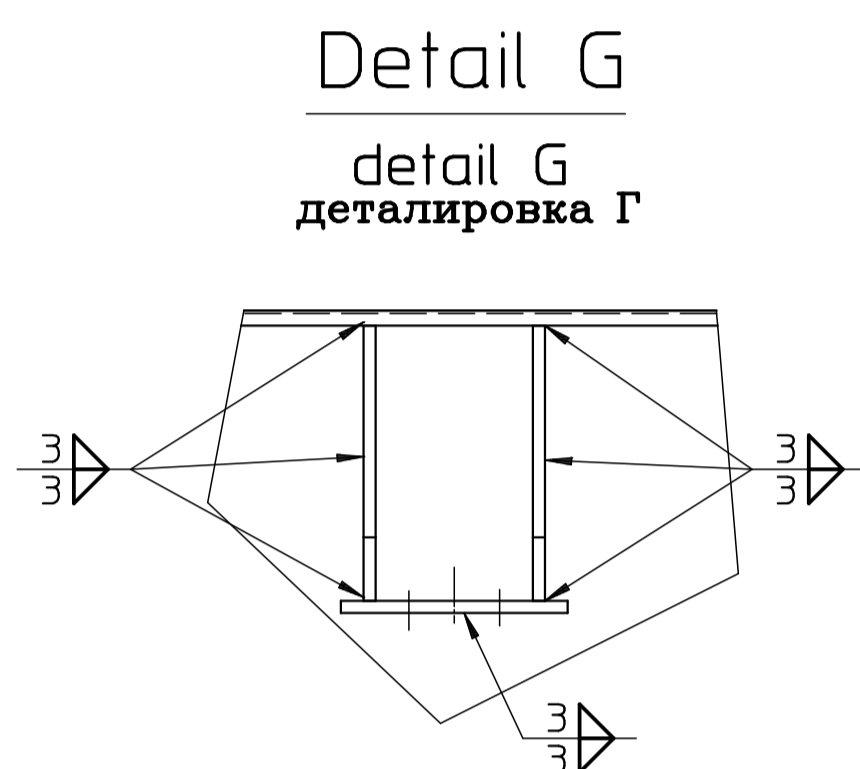
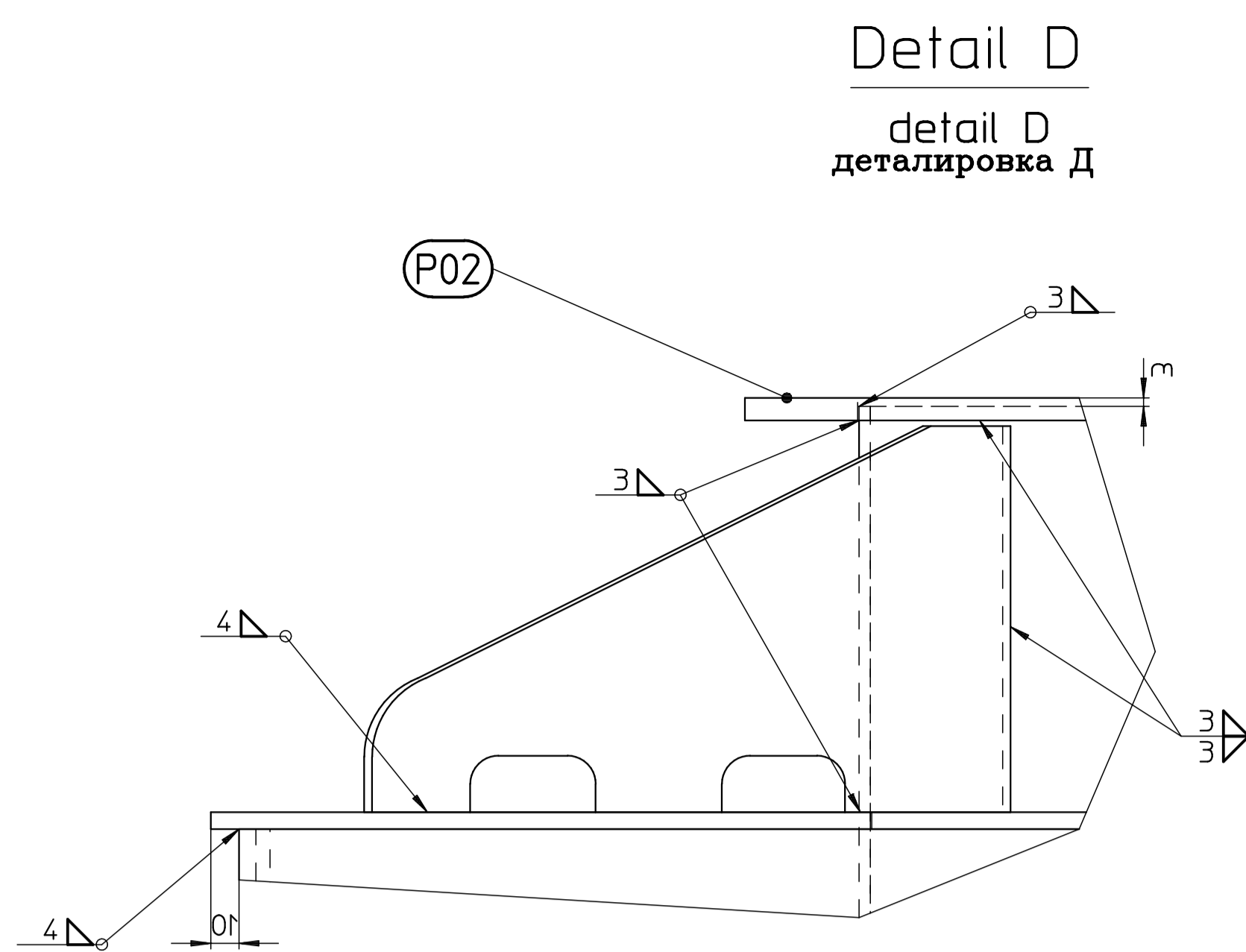
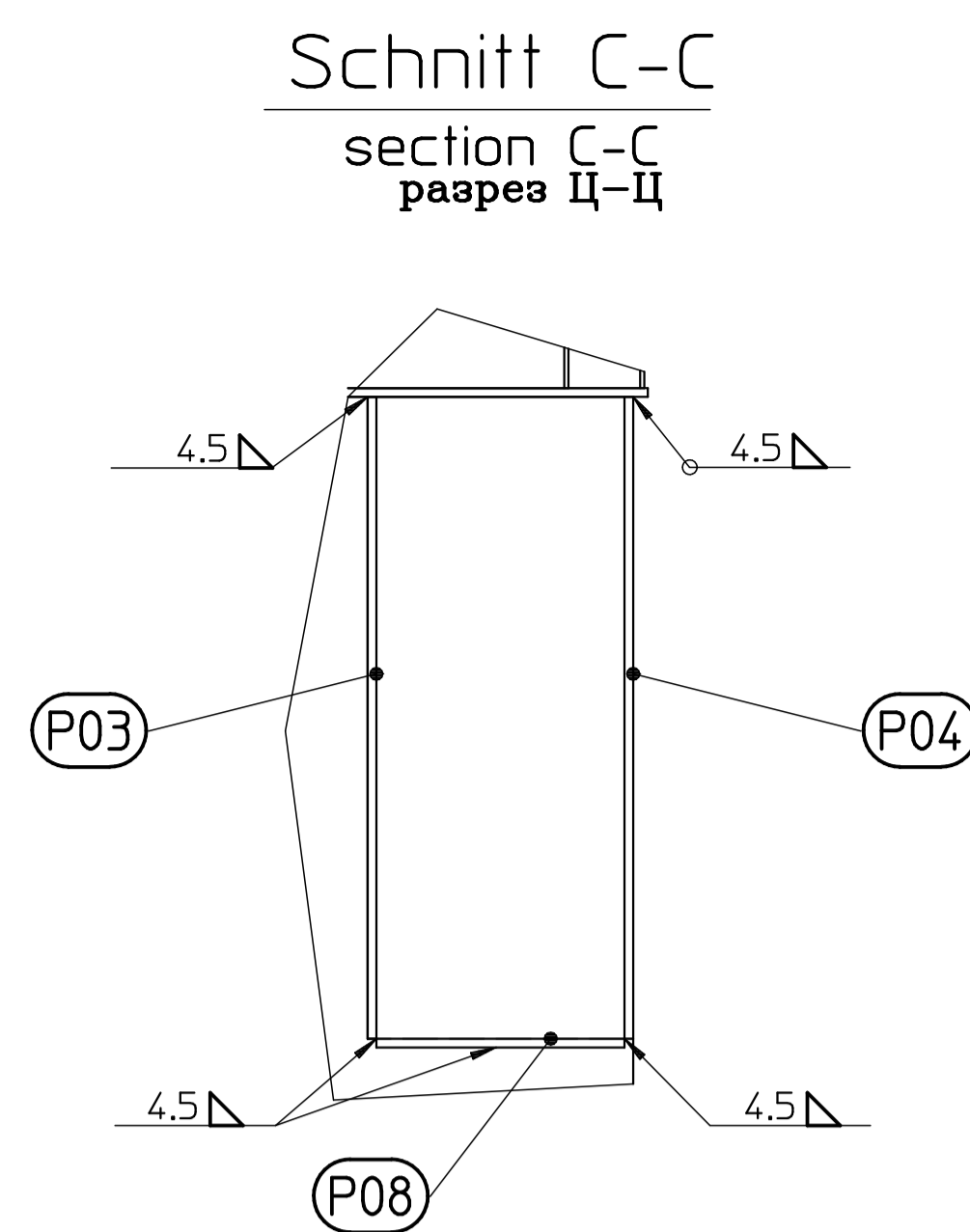
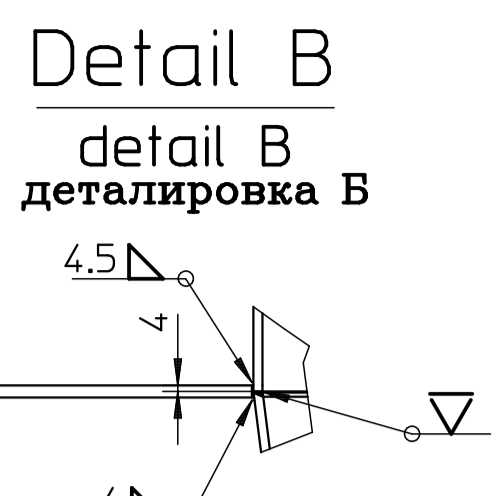


Wach out!!!
This view is turned in the drawing plain.
Position see angle option!

Внимание!
Этот вид повернут в плоскости чертежа!
Положение (опоры и пр.): см. величину угла (*)



Lage Kontrollöffnung Kegel: 270°
position of inspection door cyclone cone: 270°
Положение контрольного отверстия конуса: 270°

Freimaßtoleranzen DIN ISO 2768 m General tolerances acc. DIN ISO 2768 m Допуски на свободные размеры ГОСТ 25346–89 ИТ13
Freimaßtoleranzen für Schweißkonstruktionen EN ISO 13920-B-F General tolerances for welding constructions EN ISO 13920-B-F Допуски на свободные размеры для сварной конструкции ГОСТ 21779–82

Schweißqualität: Bewertungsgruppe D lt. EN2 5817
welding quality D acc. EN25817
Качество сварки: оценочная группа Д согласно ЕН25817.

[illegible]